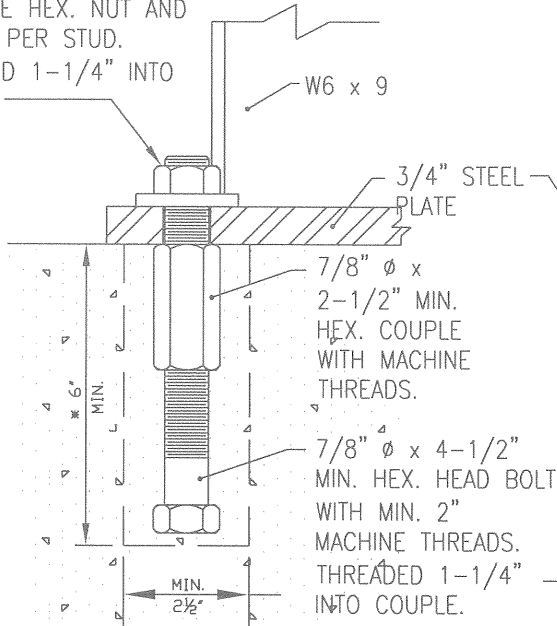
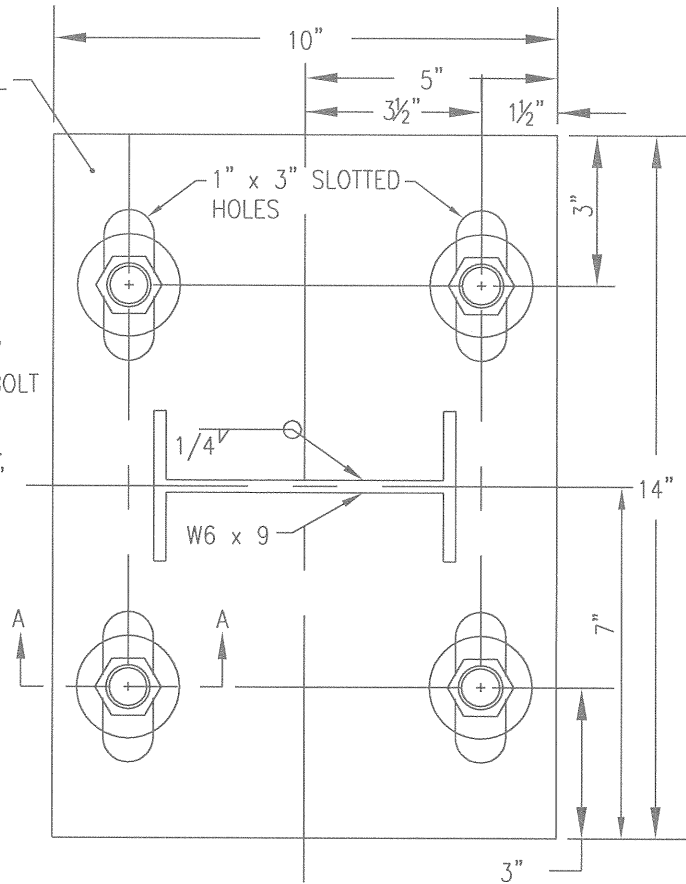


7/8"  $\phi$  x 3-1/2" MIN.  
STUD WITH MACHINE  
THREADS FULL LENGTH  
WITH ONE HEX. NUT AND  
WASHER PER STUD.  
THREADED 1-1/4" INTO  
COUPLE.



SECTION A-A



WHEN ANCHOR ASSEMBLY IS PLACED IN A PRE  
CAST OR EXISTING CONCRETE SECTION,  
DOWELING AND EPOXY SHALL BE REQUIRED.

NOTE: FASTEN ANCHOR ASSEMBLY RIGIDLY TO  
FORM BEFORE PLACING CONCRETE. STUD AND  
BOLT LENGTHS TO BE DETERMINED BY  
ENGINEER FOR EACH APPLICATION.

ALTERNATE ANCHOR ASSEMBLY - A COMPRESSION ANCHOR MAY  
BE USED IN PRE CAST AND EXISTING CONCRETE SECTIONS:

- 7/8" DIAMETER
- \* 13,000 LB. ULTIMATE PULLOUT.
- \* 20,000 LB. ULTIMATE SHEAR.

\* ULTIMATE LOAD CAPACITY IN 4,000 PSI CONCRETE.

ALL MATERIAL AND LABOR NECESSARY TO INSTALL INLET MOUNTED POSTS  
HEREIN DESCRIBED SHALL BE INCLUDED IN THE UNIT PRICE BID FOR ITEM  
606- INLET MOUNTED POST.

CHRIS E. BAUSERMAN, P.E., P.S.  
Delaware County Engineer

Delaware County Engineer

STANDARD CONSTRUCTION DRAWING  
INLET MOUNTED POST

DELAWARE COUNTY ENGINEER'S OFFICE  
50 Channing Street  
Delaware, Ohio 43015  
PHONE: (740)833-2400 FAX: (740)833-2399  
www.co.delaware.oh.us

APPROVED  
1-22-2008

REVISED

Drawn KS sheet 1  
Checked EM of 1

FILE NO.  
DCED-R2343