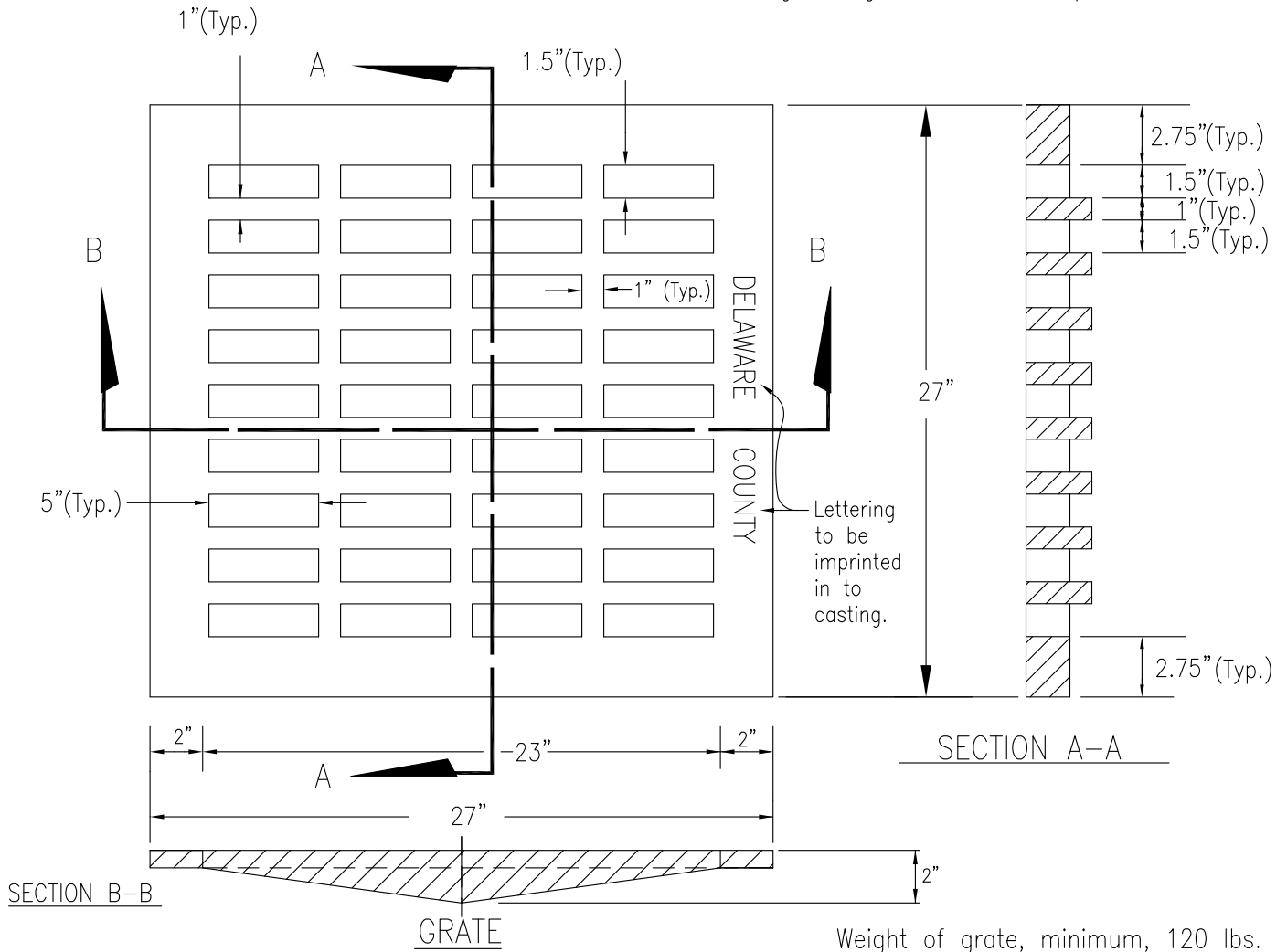


NOTE:

All grate edges to be rounded 1/4 inch radius.



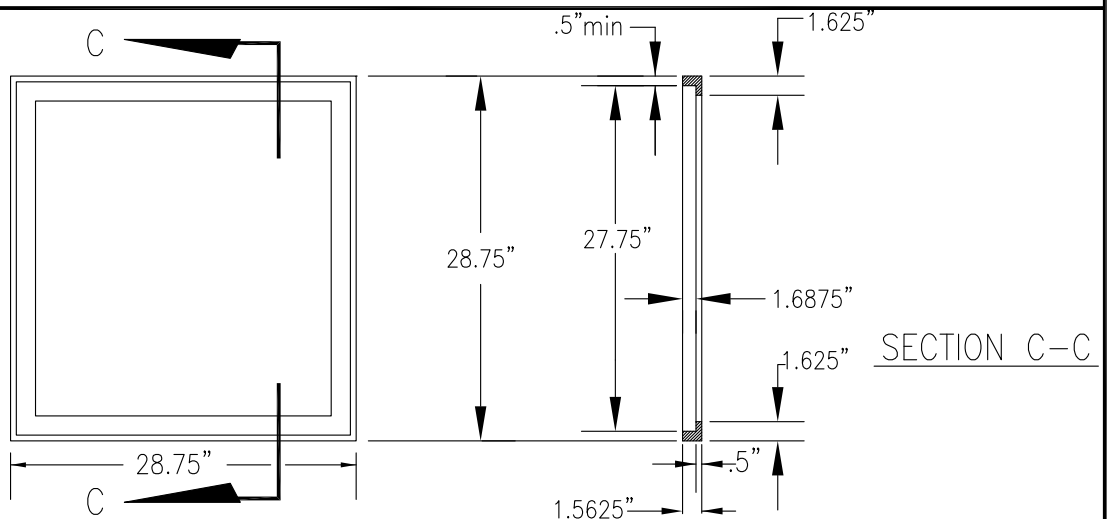
**NOTE**

Dimensions shown are equivalent decimals of 1/8 inch fractional sizes. Tolerances shall be accepted foundry standards as outlined in the Iron Castings Handbook published by the American Cast Metals Institute. Frames, grates, and covers shall meet the requirements of 604.02.

Weight of frame,  
minimum, 40lbs.

Angle Frame for  
Standard Catch Basin  
with 24" Side Inlets.

**ANGLE FRAME**



CHRIS E. BAUSERMAN, P.E., P.S.  
Delaware County Engineer

STANDARD CONSTRUCTION DRAWING  
**GRATE AND ANGLE FRAME  
FOR STANDARD  
CATCH BASIN  
2 x 2**

DELAWARE COUNTY ENGINEER'S OFFICE  
50 Channing Street  
Delaware, Ohio 43015  
PHONE: (740)833-2400 FAX: (740)833-2399  
www.co.delaware.oh.us

APPROVED  
1-22-2008

REVISED  
1-04-2010

Drawn KS sheet 1 FILE NO.  
Checked EM of 6 DCED-S139