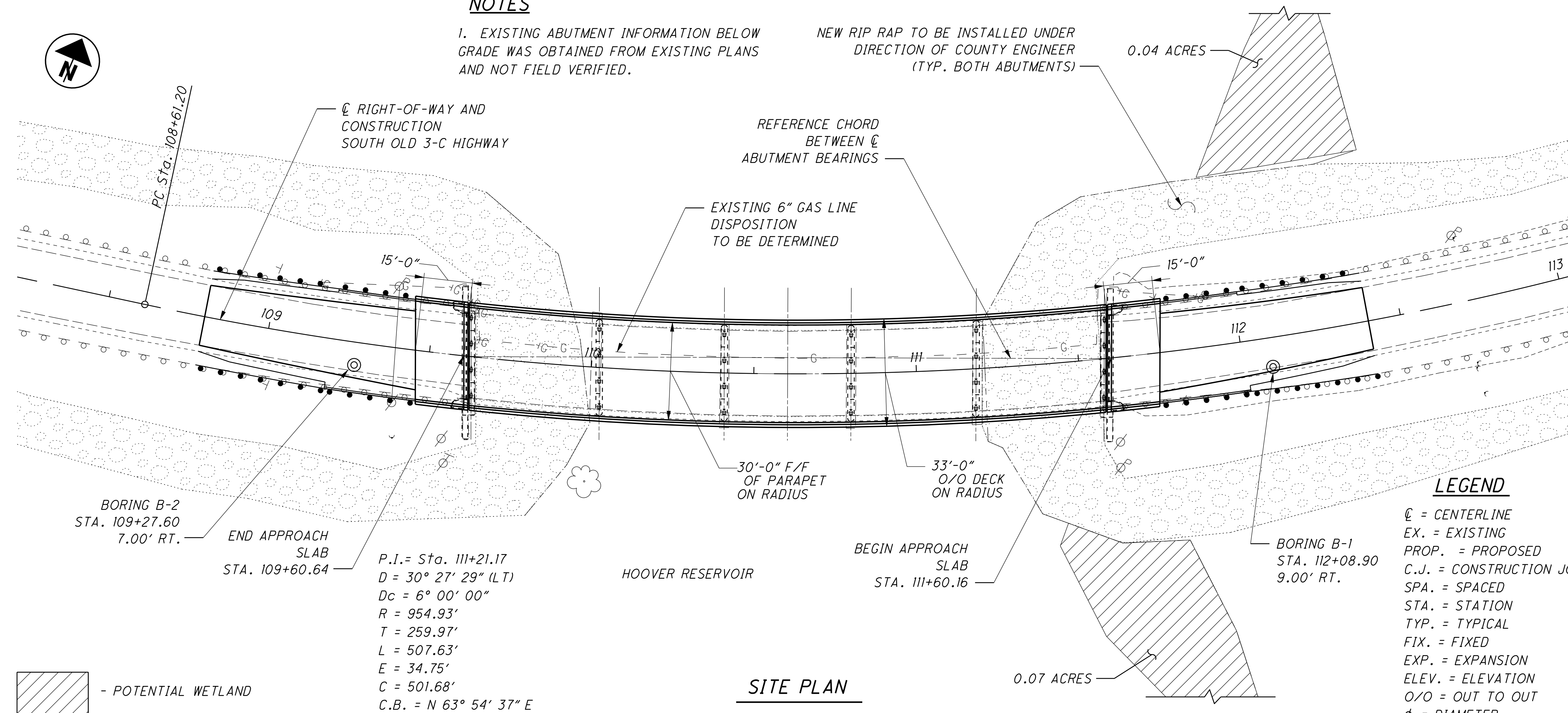


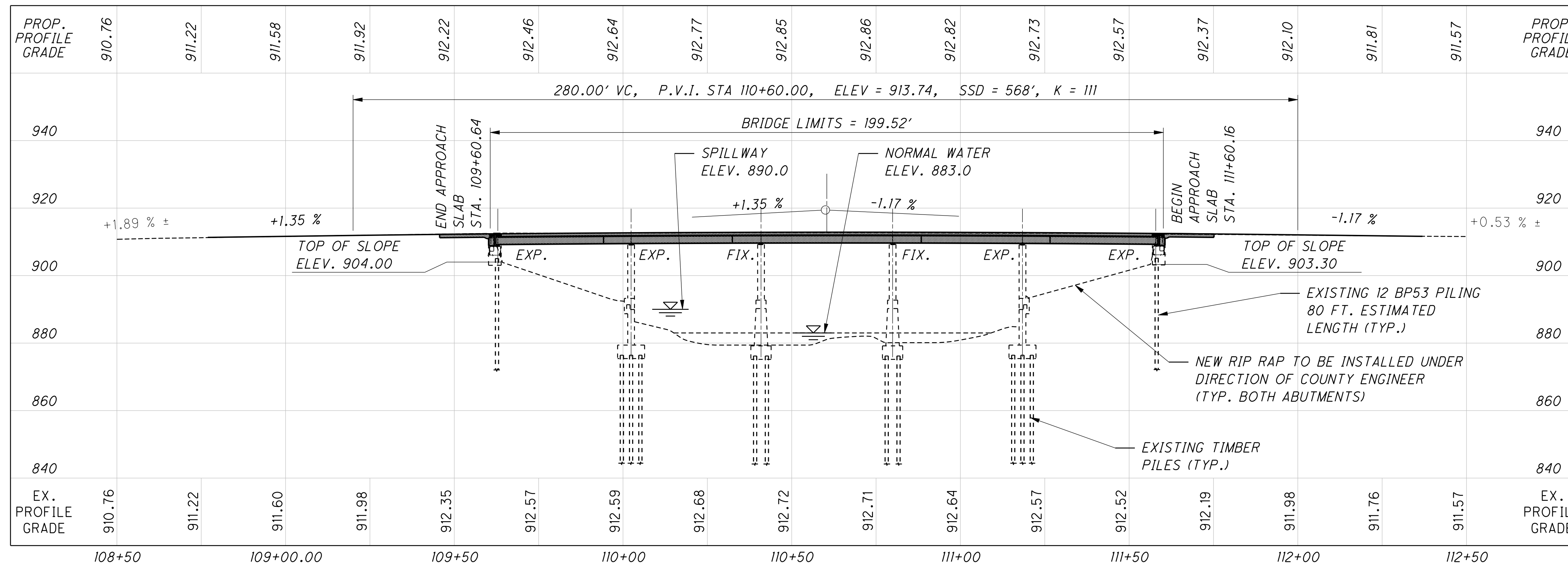
**NOTES**

1. EXISTING ABUTMENT INFORMATION BELOW GRADE WAS OBTAINED FROM EXISTING PLANS AND NOT FIELD VERIFIED.

NEW RIP RAP TO BE INSTALLED UNDER DIRECTION OF COUNTY ENGINEER (TYP. BOTH ABUTMENTS)



**SITE PLAN**



PROFILE ALONG CL RIGHT-OF-WAY AND CONSTRUCTION

**DESIGN DESIGNATION**

OPENING YEAR A.D.T. (2009) = 2100  
DESIGN YEAR A.D.T. (2030) = 5500  
TRUCKS (24 HOUR B&C) (2030) = 10%  
DESIGN SPEED = 35 MPH

**BENCHMARKS**

- BM #1 921.75  
RAILROAD SPIKE IN THE SOUTH SIDE OF A UTILITY POLE LOCATED AT THE SOUTHWEST CORNER OF MIDDLE STREET AND COLUMBUS STREET IN GALENA.
- BM #2 912.51  
RAILROAD SPIKE IN THE NORTH SIDE OF A GUY POLE LOCATED ON THE SOUTH SIDE OF OLD 3-C HIGHWAY, 100 FEET EAST OF OLD 3-C BRIDGE OVER HOOPER RESERVOIR.
- BM #3 908.39  
RAILROAD SPIKE IN THE SOUTH SIDE OF THE FIRST UTILITY EAST OF THE INTERSECTION OF OLD 3-C HIGHWAY AND DUSTIN ROAD LOCATED ON THE NORTH SIDE OF OLD 3-C HIGHWAY.

**EXISTING STRUCTURE DATA**

TYPE: CONTINUOUS STEEL BEAM WITH REINFORCED CONCRETE DECK AND SUBSTRUCTURE

SPANS: 39'-4 5/8"; 38'-5 3/8"; 39'-0"; 38'-5 3/8"; 39'-4 5/8" C/C BEARINGS.

ROADWAY: 26'-0" F/F OF 1'-6" SAFETY CURBS

SKEW: NONE

LOADING: C.F. = 130

DECK: 7" REINFORCED CONCRETE DECK WITH 2 1/2" ASPHALT CONCRETE OVERLAY

SUBSTRUCTURE: VARIES

ALIGNMENT: 6° CURVE LEFT

DATE BUILT: 1954

STRUCTURAL FILE NUMBER: 2132370

APPROACH SLABS: 15' LONG

WEARING SURFACE: 2 1/2" ASPHALT CONCRETE

**PROPOSED STRUCTURE DATA**

TYPE: CONTINUOUS STEEL BEAM WITH REINFORCED COMPOSITE CONCRETE DECK AND REHABILITATED REINFORCED CONCRETE SUBSTRUCTURE

SPANS: 39'-4 5/8"; 38'-5 3/8"; 39'-0"; 38'-5 3/8"; 39'-4 5/8" C/C BEARINGS.

ROADWAY: 30'-0" T/T OF PARAPET

SKEW: NONE

LOADING: HS20-44, CASE II & ALTERNATE MILITARY

FUTURE WEARING SURFACE LOADING: 60 PSF

SUBSTRUCTURE: VARIES

DECK: 8 1/2" COMPOSITE REINFORCED CONCRETE DECK

STRUCTURAL FILE NUMBER: 2132370

APPROACH SLABS: AS-1-81 (15' LONG)

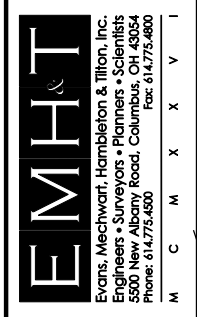
WEARING SURFACE: 1" MONOLITHIC CONCRETE

ALIGNMENT: 6° CURVE LEFT

SUPERELEVATION: 0.08 FT. PER FT.

LATITUDE: N 40°12'48"

LONGITUDE: W 82°52'54"



DATE	XX-XX-09
REVIEWED	CJS
DRAWN	GB
DESIGNED	LMG
CHECKED	RUE
STRUCTURE FILE NUMBER	2132370
DELAWARE COUNTY	STA. 109+60.64
	STA. 111+60.16

**SITE PLAN**  
SOUTH OLD 3-C BRIDGE No. DEL-CR24-0502  
OVER HOOPER RESERVOIR

**DEL-CR24-5.02**  
PID No. 86459

PLOTTED BY rhudson 7/16/2009 12:40:30 P:\2009\0632\DDOT\DEL\86459\structures\sheet\024\_0502CSP001.dgn