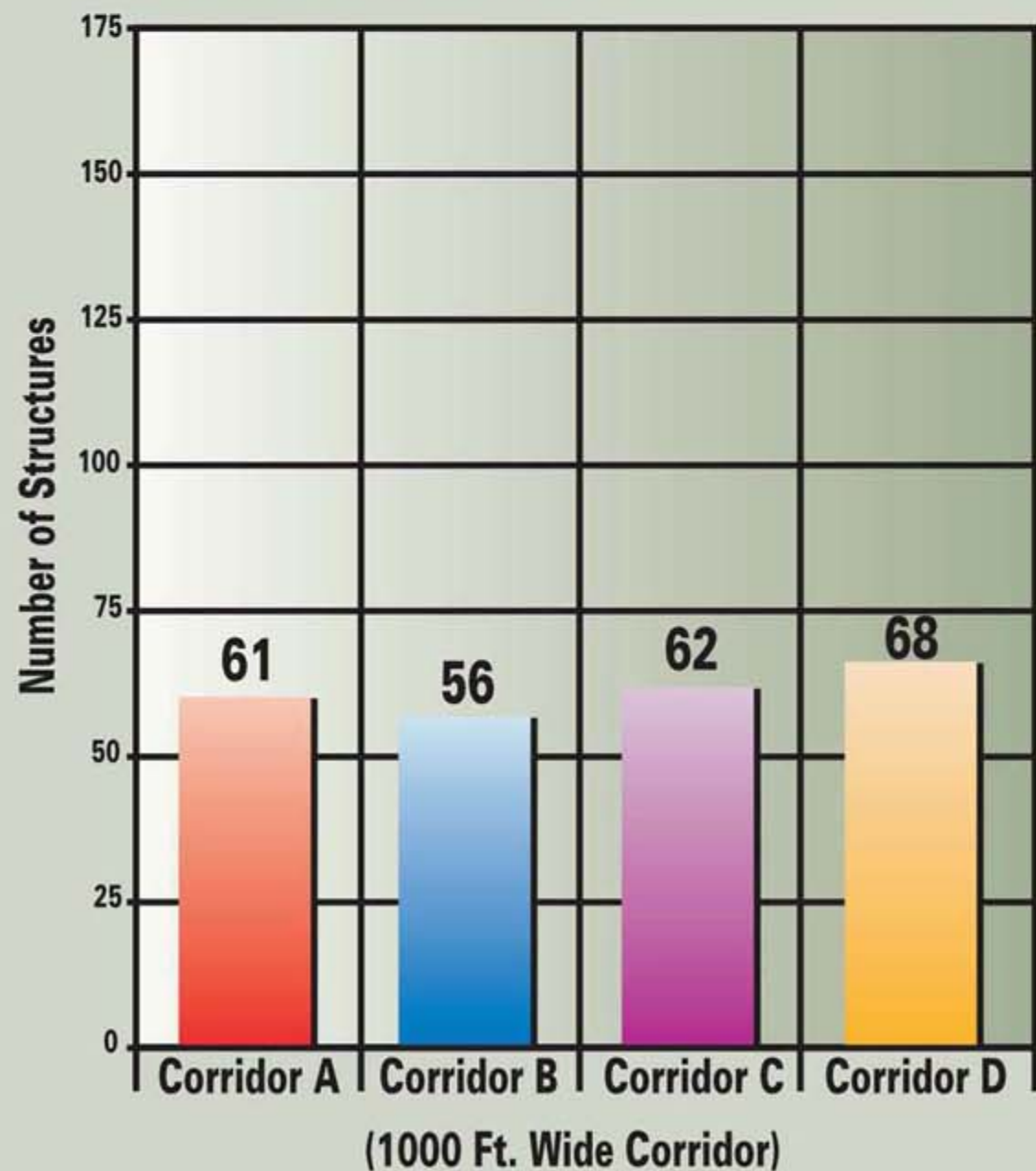


## Disadvantages to Upgrading Liberty or S. Section Line Roads

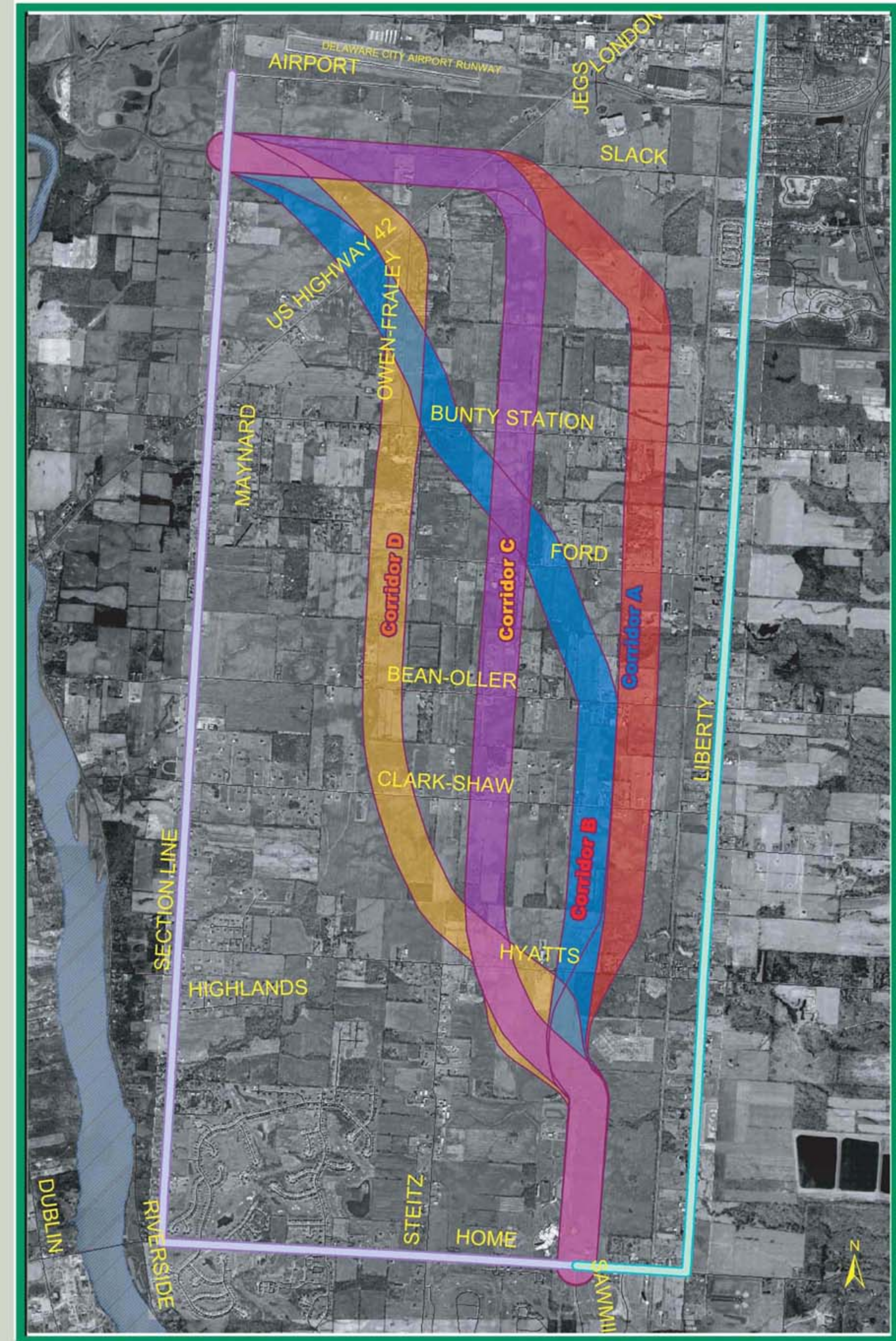
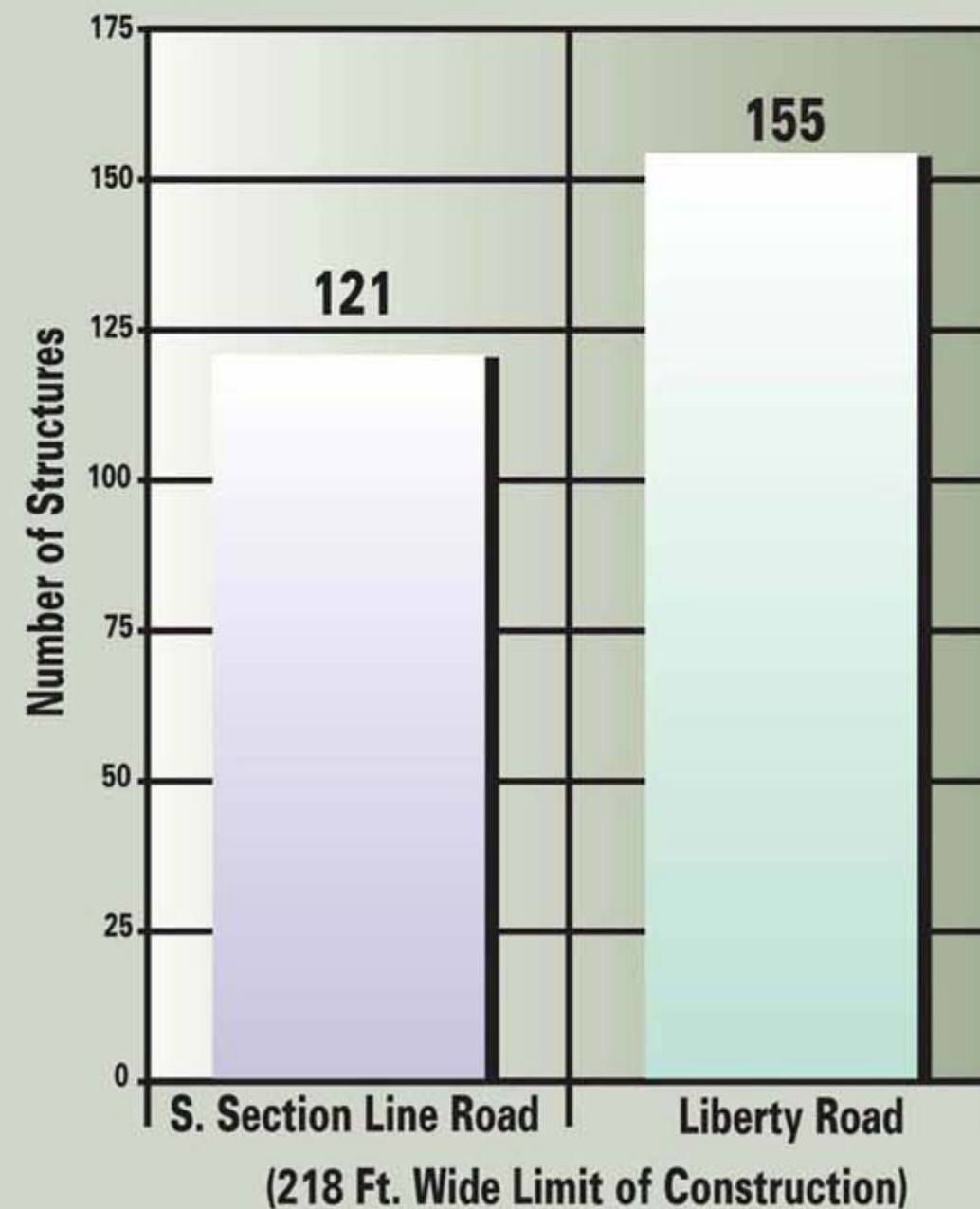
- No alignment flexibility (cannot avoid homes and other structures)
- Requires frontage roads on both sides of parkway to allow local residential access
- Large number of impacted structures
- Lengthened disruption to local traffic during construction
- Not compatible with Liberty Township, Concord Township, or City of Delaware Comprehensive Plans

Maximum Potentially Impacted Houses & Structures



VS

Minimum Estimated Taken Houses & Structures



▭ S. Section Line Road Minimum Limits of Construction  
▭ Liberty Road Minimum Limits of Construction