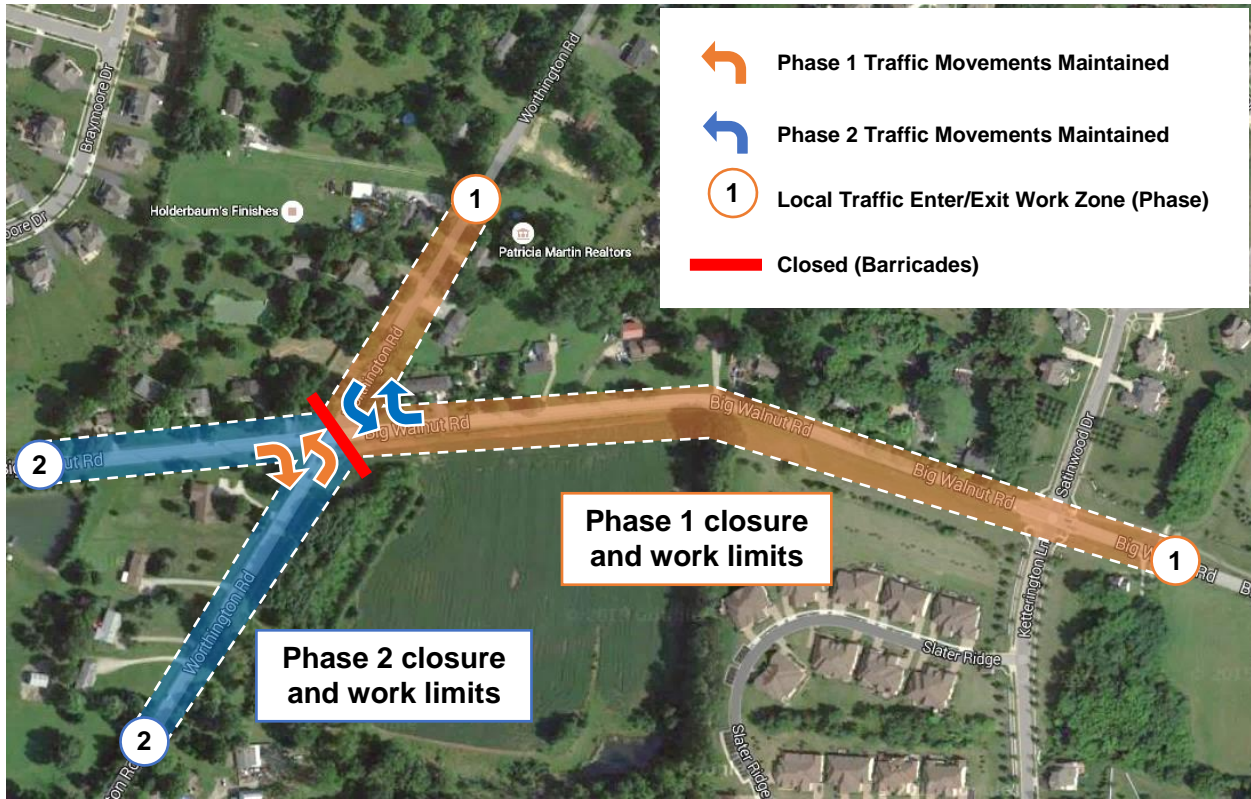


Worthington and Big Walnut Road Intersection Improvements

Road Closure Information

May 2017



Scope of Project:

The Worthington and Big Walnut Intersection Improvement will upgrade the current 4-way stop intersection with turn lanes approaching from each direction and a new traffic signal. The project will also realign the curve on Big Walnut Road to improve safety.

Phase 1:

Closures: Big Walnut Road from Worthington to Satinwood Drive/Ketterington Lane
 Worthington Road for about 1000 feet north of Big Walnut Road

Dates: May 30 to September 1, 2017 (subject to weather delays)

Work Zone Resident Access: Worthington Road enter/exit from/to the north; Big Walnut Road enter/exit from/to the east

Phase 2:

Closures: Big Walnut Road for about 800 feet west of Worthington Road
 Worthington Road for about 1000 feet south of Big Walnut Road

Dates: September 1 to November 1, 2017 (subject to weather delays)

Work Zone Resident Access: Worthington Road enter/exit from/to the south; Big Walnut Road enter/exit from/to the west



Delaware County Engineer's Office
 50 Channing Street
 Delaware, Ohio 43015
 Phone: 740-833-2400
 Fax: 740-833-2399
 Email: delcoeng@co.delaware.oh.us
 Web: www.DelawareCountyEngineer.org

**Worthington and Big Walnut Road Intersection Improvements
Road Closure Information
May 2017**

DETOUR MAP



Effective Dates:

May 30 to November 1 (subject to weather)