

SAWMILL PARKWAY EXTENSION ROUNDBABOUTS - RULES OF THE ROAD

SLOW DOWN WHEN APPROACHING A ROUNDABOUT.

CHOOSE YOUR LANE PRIOR TO ENTERING THE ROUNDABOUT BASED ON YOUR DESIRED DESTINATION. THE RIGHT LANE IS GENERALLY FOR RIGHT TURNS OR STRAIGHT-THROUGH MOVEMENTS. THE LEFT LANE IS GENERALLY FOR STRAIGHT-THROUGH MOVEMENTS, LEFT TURNS, AND U TURNS. FOLLOW SIGNAGE.

YIELD TO PEDESTRIANS AS YOU ENTER AND EXIT THE ROUNDABOUT.

YIELD AT ENTRY. ALL ENTERING VEHICLES MUST YIELD TO CIRCULATING TRAFFIC IN THE ROUNDABOUT. LOOK TO THE LEFT FOR CIRCULATING TRAFFIC AND ENTER WHEN IT IS SAFE. **REMEMBER - CIRCULATING TRAFFIC HAS THE RIGHT-OF-WAY!**

CIRCULATION IS ALWAYS COUNTER-CLOCKWISE.

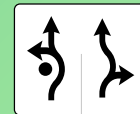
DO NOT CHANGE LANES. MAINTAIN YOUR LANE POSITION UNTIL EXITING THE ROUNDABOUT. SIGNAGE WILL ASSIST YOU IN EXITING AT YOUR DESIRED LOCATION.

RESUME LEGAL SPEED

Ford Rd



20
MPH



TO TRAFFIC
IN
ROUNDABOUT



Sawmill Pkwy. ↗

SPEED
LIMIT
45



www.sawmillparkway.org



BURGESS & NIPLE